

# Tourist safety in South Africa

Do not be alarmed if South Africans announce that they were held up by "robots" (their name for traffic lights), however considering that South Africa is one of the most dangerous countries in the world not at war, it does make sense to **take special precautions**.



Avoid ostentatious displays of expensive jewellery, cameras, laptops and other valuables.

Plan your route beforehand, and the type of transport you're going to use.

Keep your car doors locked at all times and wind windows up.

If hiring a car hire one with a closed trunk (called a "boot" in south Africa), as opposed to a hatchback. Lock valuable items in the trunk.

Be aware of whether any vehicle or people are following you (being followed from the airport and robbed on arrival at your hotel is relatively common).

Never pick up strangers, no matter how friendly they appear.

At night, park in well-lit areas.

Explore in groups rather than alone, and stick to busy, well-lit streets.

At night stay clear of dark, isolated areas.

Avoid isolated beaches.

Never carry large sums of money around. Travellers cheques are your best bet.

Always carry a map with you in the event that you do head off course (although being seen with a map is a giveaway that you're a tourist).

Keep your passport, plane ticket and other important documents in a safe place (make a photocopy of the documents before you leave, and give them to somebody for safekeeping).

Book your hotel room between the 2nd and 6th floors of the hotel, as being on at least the second floor creates a gap between yourself and dangers near reception (e.g. robberies, car-bombs, shootouts, etc...). Don't go above the 6th floor as ladders don't reach above that in the case of fire.

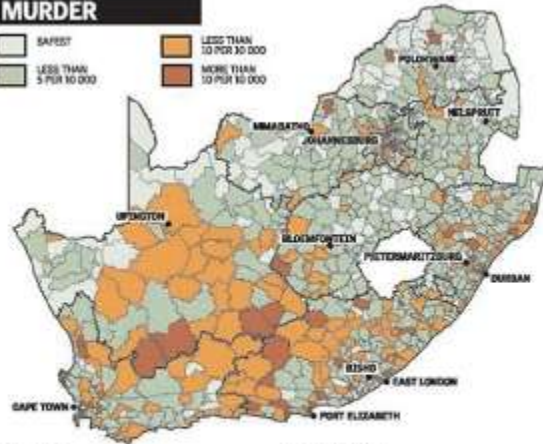
If in any doubt about the safety of an area, phone a police station for advice.

The level of crime in South Africa is unfortunately high and caution must be taken! Robbery, armed assault, carjackings, muggings, theft and pickpocketing occur everywhere in South Africa. Do not make yourself vulnerable to these criminals. If you take care and stay alert you have less chance of experiencing this crime.

These are obviously not the only safety issues in the country and there are other things to keep in mind, such as your health, terrorism, political tension and airline safety. You should be aware of these things at home, but when in South Africa be sure to be informed. Never wander alone, especially into townships or to large gatherings which could turn violent unexpectedly.

South Africa is a beautiful country and many people just like you live here, so it isn't all that bad. Don't let the crime spoil your vacation, but don't let negligence ruin your life. Stay alert and be aware. If you take care you should enjoy your holiday with no problems.

## MURDER



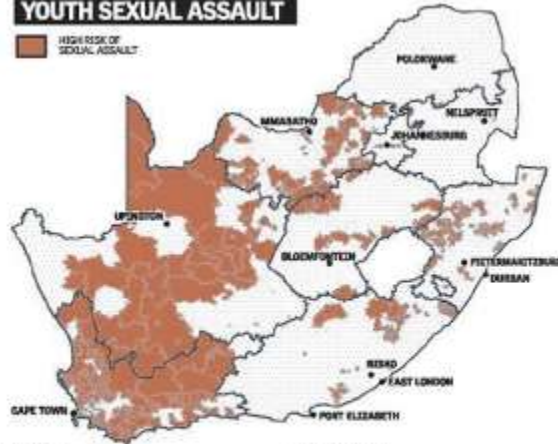
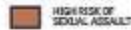
### HOTSPOTS

- The Northern Cape and the Western Cape are the worst, followed by the Eastern Cape. Freeburg, followed by places such as Kalamas, Robinson and Grikwaasid in the Northern Cape are high risk areas.
- In the Western Cape, Vredenburg near Plettenberg, Graaff-Reinet near Swartkops and Kameel in the interior are hotspots. Closer to Cape Town, the danger zones are Wynberg, Oordevaard, Langa, Klopfontein, Klipfontein, Heerenvoerd. In the Eastern Cape, Graaff-Reinet, Lambertonia, Petrusburg, Koppies and Jeffrey's Bay are high risk zones.

### SAFER ZONES:

- LIMPOPO, except for Bata in the north, and MPUMALANGA, except for Klerksburg on the eastern seaboard, are among the safer zones for murder.
- The FREE STATE has a low risk, except Wanda and Luthuli in the southern Free State.

## YOUTH SEXUAL ASSAULT



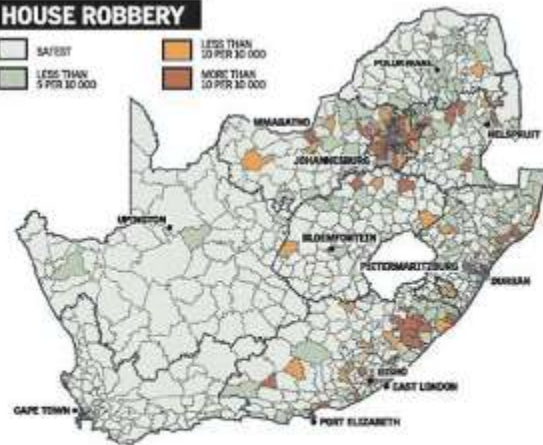
### HOTSPOTS

- Children are at great risk in most areas of the Western and Northern Cape.

### SAFER ZONES:

- There are few high-risk areas in Mpumalanga or Limpopo. Gauteng, the Free State, the Eastern Cape and the KZN coastal region are also not at high risk.

## HOUSE ROBBERY



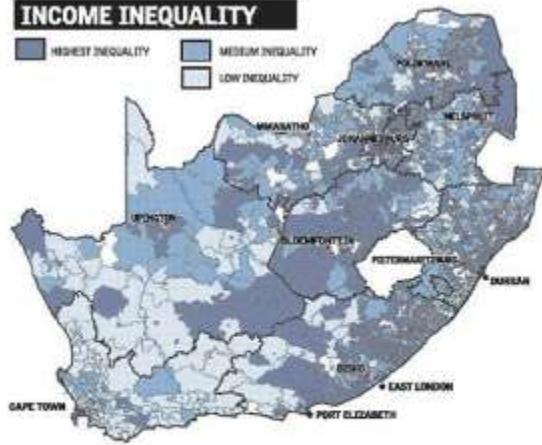
### HOTSPOTS

- The entire Gauteng is at high risk of house robberies, except for a few tiny spots on the coast. Areas close to the coast of New-Zulu Natal and the Eastern Cape are also at high risk.
- In the Eastern Cape, the high risk areas include the suburbs around Pietermaritzburg, suburbs northwest of Durban city and Richmond and Thornhill in the Midlands.

### SAFER ZONES

- The Northern Cape, Western Cape, Limpopo and the Free State. The whole of the Western Cape is at low risk, except West Bay, the northern suburbs such as Rondebosch and Agengas and Oordevaard.

## INCOME INEQUALITY



### INEQUALITY:

- HIGH INEQUALITY:
  - Gauteng, the Free State.
- HIGH EQUALITY:
  - Large parts of the Western and Northern Cape.